



*Jordan fishwick*

56 Whitby Road, Fallowfield, M14 6QL  
£1,994 Per Calendar Month





**Whitby Road Manchester  
M14 6QL**

**£1,994 Per Calendar Month**



The Property

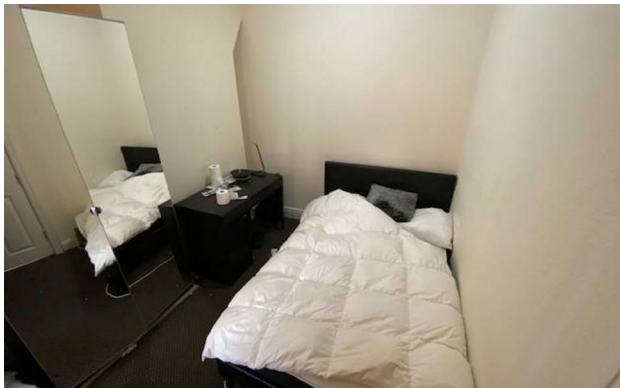
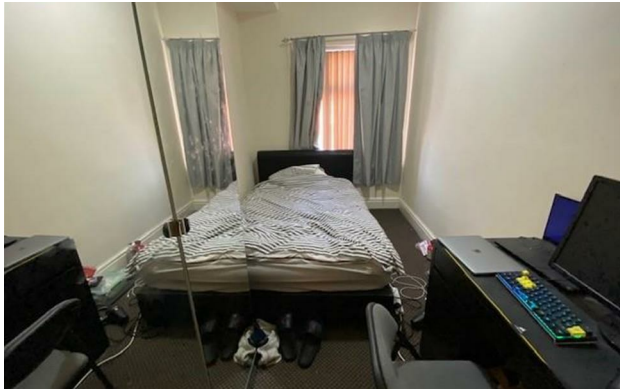
\*\*\* property now let \*\*\*

Attention all landlords - similar properties urgently required.  
TENANTS WAITING.

- Available July 2023
- £115.00 PPPW
- Four Double Rooms
- Spare Room
- Fully Furnished
- Modern and Spacious
- Great Location
- No Deposit Option Available
- Council Tax Band B



Energy Efficiency Rating		
	Current	Potential
Very energy efficient - lower running costs		
(92 plus) <b>A</b>		
(81-91) <b>B</b>		<b>84</b>
(69-80) <b>C</b>	<b>69</b>	
(55-68) <b>D</b>		
(39-54) <b>E</b>		
(21-38) <b>F</b>		
(1-20) <b>G</b>		
Not energy efficient - higher running costs		
<b>England &amp; Wales</b>	EU Directive 2002/91/EC	





These particulars are believed to be accurate but they are not guaranteed and do not form a contract. Neither Jordan Fishwick nor the vendor or lessor accept any responsibility in respect of these particulars, which are not intended to be statements or representations of fact and any intending purchaser or lessee must satisfy himself by inspection or otherwise as to the correctness of each of the statements contained in these particulars. Any floorplans on this brochure are for illustrative purposes only and are not necessarily to scale.

Offices at: Offices at Chorlton, Didsbury, Disley, Hale, Glossop, Macclesfield, Manchester Deansgate, Manchester Whitworth Street, New Mills, Sale, Wilmslow and Withington